



INPID v3.1 takes integrating your P&ID drawing data with your SPI data and document management system to the next level.

1. About WiseTools INP&ID

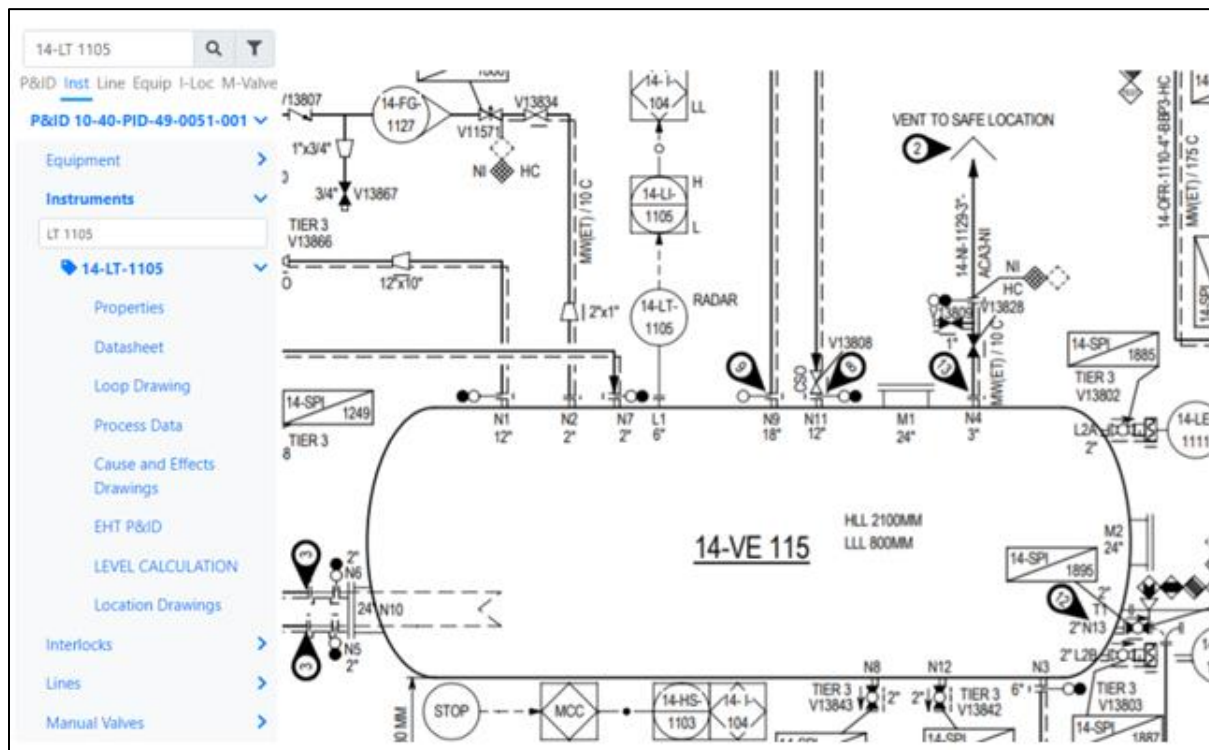
INP&ID is a cost-effective application that automates the integration of CAD or SPPID P&ID drawing data with SPI database data and documents stored in a document management system.

It automatically converts:

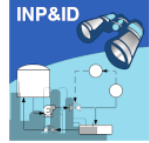
- native P&ID drawings to intelligent PDFs with built in entity hotlinks.
- P&ID off-page connectors into hotlinks that, when selected, the related P&ID drawing opens.

Using simple global searches for P&ID drawings, instrument tags, equipment tags, manual valves, line numbers and interlock tags, your P&ID drawings become a graphical interface to all related SPI data and documents. Each entity search opens related P&ID data or drawings.

Below is an example of an INP&ID global instrument search opening a related P&ID drawing:



- When the instrument tag hotlink is selected, INP&ID zooms into it on the P&ID drawing window and shows a list of its related documents including external documents and SPI associated documents.



- The document list under the instrument tag shows all related documents and drawings available from INView and the document management system.

2. Reports and Audit Features

INP&ID v3.1 contains built in reports and audits:

Audits:

Audit results are available as Excel documents.

- P&ID Instruments not in SPI
- SPI Instruments not in P&ID
- SPI Instrument P&ID Mismatch
- SPI P&ID no Mismatch
- P&ID Duplicate Instruments

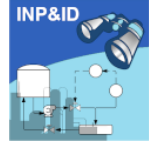
Reports:


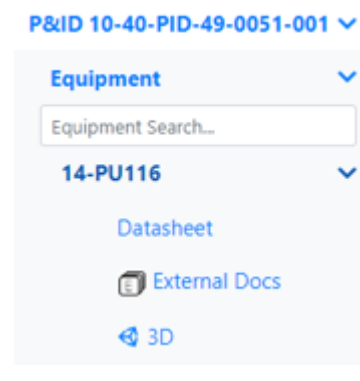
- P&ID Drawings
- P&ID Instruments
- P&ID Equipment Numbers
- P&ID Line Numbers
- P&ID Interlock Tags
- P&ID Not Scanned

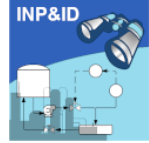
3. Added More Document Hotlinks to P&ID Entities

INPID v3.1 includes more hotlinks to P&ID entities. For example:

Menu	Description
P&ID 10-40-PID-49-0051-001 ▾ Equipment > Instruments > Interlocks > Lines > Manual Valves >	Expand a P&ID drawing number to display available entities menu. Added support for: <ul style="list-style-type: none"> • E interlock tags. • P&ID tagged manual valves. • External documents and SPI attached documents from instruments.



	<p>Expand a P&ID drawing number to display available entities menu. Added support for:</p> <ul style="list-style-type: none"> • External documents and SPI attached documents from instruments. • E interlock tags. • P&ID tagged manual valves.
	<p>Expand Equipment, to displays a list of all Equipment on the P&ID drawing.</p> <ul style="list-style-type: none"> • Open the equipment datasheet or all external documents and drawings related to the equipment from the External Docs. • If a 3D model is available, option to open the equipment in the 3D model.



<p>Equipment ></p> <p>Instruments ></p> <p>LT-1105</p> <p>14-LT-1105 ></p> <ul style="list-style-type: none">PropertiesDatasheetLoop DrawingProcess DataPhotoCause and Effects DrawingsEHT P&IDLEVEL CALCULATIONLocation Drawings	<p>Expand Instruments to display a list of all instruments on the P&ID drawing.</p> <p>Select or use the Search option.</p> <ul style="list-style-type: none">• Click the instrument tag to get the related instrument properties, documents and drawings list.• New options to link:<ul style="list-style-type: none">○ SPI associated documents, and○ INView photos
--	---

4. Added support for INView Instrument Tag Photos

Photos stored in INView that are relevant to specific instrument tags, can be accessed from INP&ID. If they are available to an instrument tag, a photo link is displayed under the tag name. Click the Photo link to view the photo.

