



INSync[®] Admin/Review

WISETOOLS PRODUCTIVITY TOOLS



BENEFITS

- **Easy** to use.
- Intuitive user interface.
- INSync domain database refreshed automatically or manually.
- **Browser** interface to INSync Review.
- Secure – instrumentation data is view only.

100% SPI COMPLIANT

- Compatible with Engineering or As-Built/Owner Operated databases.
- Version independent. Supports v2007 and greater.
- Compatible with Oracle, SQL and Watcom (Sybase SQL Anywhere) databases.

EASY TO USE

- Download SPI data wirelessly to tablet.
- View SPI data in the field.
- Synchronize data between the tablet and your SPI database using an INSync Data Package.

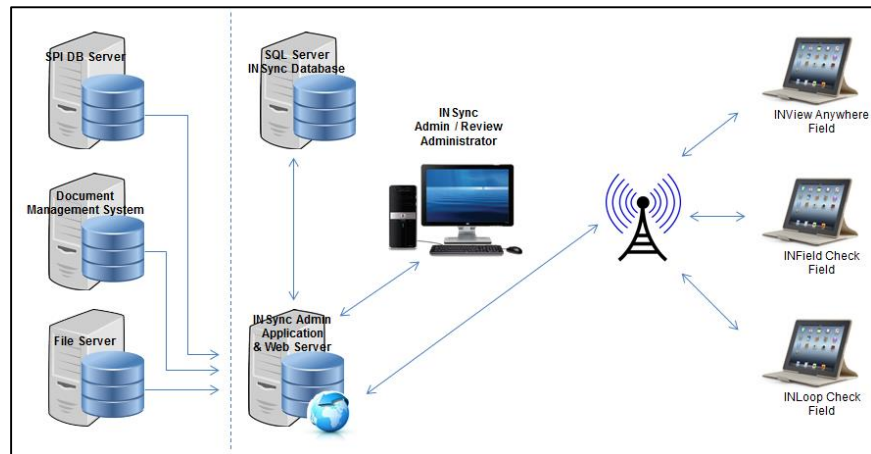
SIMPLE SEARCHING

- Use wild card search for any object anywhere in the plant hierarchy.
- Displays tag, loop and wiring properties and associated documents.

INSync[®] Admin creates SPI data packages specifically for INView Anywhere – Infield Check, INLoop Check and INWalkdown – Instruments.

Highlights

- Obtains data for the data packages by connecting to a SPI database and downloading data to an INSync domain database.
- Creates 3 different types of data packages:
 - INView Anywhere; view only data,
 - INField Check data packages, and
 - INLoop Check data packages
- Data packages are:
 - created with predetermined expiry dates to ensure data is up-to-date.
 - customizable as to content specific to a Domain, Plant, Area, Unit or by loop(s).
- Retrieves related tag or loop documents from a Document Management System like Open Text LiveLink and/or a file server.
- SPI data in INSync domain database is refreshed automatically or manually as determined by the INSync Administrator.



INSync[®] Review enables the user to easily view, track and manage data uploaded from INField Check, INLoop Check and INWalkdown – Instruments into the INSync domain database using an internet browser.

Highlights

- Access via an internet browser.
- For use with INView Anywhere running the INField Check, INLoop Check or INWalkdown – Instrument add-on app.
- **INField Check** markups and photos related to SPI objects are made in the field and uploaded from the tablet are available to view (by users) and to manage by an INSync Review administrator.
 - The as-found data can be rejected, approved or marked complete
- **INLoop Check** data captured in the field and uploaded from the tablet is available to view (by users) and to manage by an INSync Review administrator.
 - Approve an instrument for export, reissue an instrument back to the field for further clarification and/or export one or more instruments to Excel for import into SmartPlant Instrumentation
- **INWalkdown – Instruments** - data collected for instruments contained in an INWalkdown data package including walk down status, attached field photos are available to view (by users) and to manage by an INSync Review administrator.
 - Approve an instrument for export, reissue an instrument back to the field for further clarification and/or export one or more instruments to Excel for import into SmartPlant Instrumentation.

For more information on any of our products or services, please visit us at: www.wisetools.ca
OR
Call:
+1.403.233.8015 or
+1.866.213.5268 (toll free)

INSync[®] Admin / INSync[®] Review continued...

REQUIREMENTS

- **INSync Admin:**
 - **Client:**
 - Windows v7.x, v10
 - .NET Framework 4.5.x
 - Oracle .NET Access Component (ODT) v11.x (if Oracle SPI database)
 - **DB Server**
 - Windows Server 2016, 2019
 - MS SQL Server Express v3.5.79+ or MS SQL Server v2008 +
 - SQLite ODBC Driver v3.x; 32 bit
- **INSync Review:**
 - **Client:**
 - **Browser** - MS Internet Explorer v10.x or v11.x, MS Edge, Google Chrome v 47.0.x
 - Windows v7.x +
 - .NET Framework 4.5
 - Adobe Reader v9 +
 - **Web Server**
 - Windows Server 2016, 2019
 - Browser software as indicated above
 - IIS Manager v7.x +
 - .NET Framework v4.5

OTHER PRODUCTIVITY TOOLS

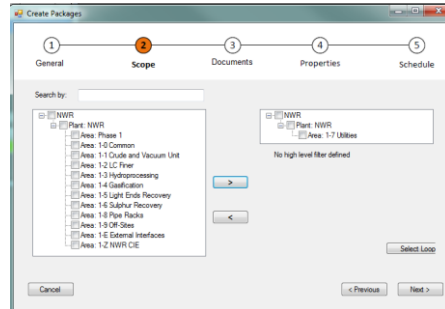
- INAuditPro
- INView / INView API
- INP&ID
- INDigital
- INView Anywhere: INField Check, INLoop Check, and INWalkdown – Instruments
- INFront

WISETOOLS SERVICES

- SPI Consulting
- SPI Data Migration
- SPI Data Merging
- SPI Database Audits
- SPI Document Conversion
- Training for SPI and WiseTools Products
- Custom Programming
- SPI Upgrades

*SmartPlant Instrumentation (SPI) is a registered trademark of Intergraph Corporation/Hexagon.

INSync[®] Admin – Creating INView Anywhere; INField Check, INLoop Check and INWalkdown – Instrument data packages is simple:



1. Enter general package information; package name, users, stale date.
2. Define the scope of the package; plant, area, unit, loops to be included.
3. Identify the documents to include; attached documents, Loops, P&IDs, Process Data Reports and Calculation Reports and Document Management System documents
4. Refine the properties if required.
5. Define a schedule for syncing the SPI database with the INSync database if required.
6. Click Finish.

INSync[®] Review - INField Check, INLoop Check and INWalkdown - Instruments have a list view showing all items and a details view showing specific details about the items. Below is an example of INSync Review displaying INLoop Check data.

INLoop Check List View

Loop name	Unit	Status	Ready for Commissioning	Issued for Completions Date	Review Approver	Last Modified Date	Last Upload Date	Package Name	<input type="checkbox"/>
17-A-3103	1-7-3 Fire Water	Pass	Ready		Admin	2016-06-06 3:44:44 PM	2016-06-06 3:44:44 PM	10-70-LFTR-70-0001-Rev1	<input type="checkbox"/>
17-F-1111	1-7-1 Raw and Potable Water	Incomplete	Not ready			2016-06-07 11:23:15 AM	2016-06-07 11:23:15 AM	test attached document	<input type="checkbox"/>
17-L-3108	1-7-3 Fire Water	Fail				2016-06-06 2:56:31 PM	2016-06-06 2:56:31 PM	Unit 70 - Test -Green	<input type="checkbox"/>
17-P-3124	1-7-3 Fire Water	Incomplete	Not ready			2016-06-06 2:56:31 PM	2016-06-06 2:56:31 PM	Unit 70 - Test -Green	<input type="checkbox"/>

Instrument Information

Instrument Tag	17-AIT-3103
Instrument Type	ANALYZER INDICATING TRANSMITTER FIRE
I/O Type	AI
Admin Comments	
Last Modified Date	
PCS Check	
PCS user	Control
Admin user	
Check Status	Pass
Fail Classification	
Notes and Comments	
Ready for Commissioning	<input type="radio"/> Not Ready <input checked="" type="radio"/> Ready
Field Check	
Field user	Field
Admin user	
Check Status	Pass
Fail Classification	
Notes and Comments	
Ready for Commissioning	<input type="radio"/> Not Ready <input checked="" type="radio"/> Ready

AI PCS Check Sheet

FORM TYPE	LFT Lead PCS Form	TAG NUMBER	17-AIT-3103	
Analog Input	SYSTEM	PCS	TCP NUMBER	17-FIR-03
INSTRUMENT TYPE	ANALYZER INDICATING TRANSMITTER FIRE	PCS Range	100	
CHK	INITIALS	Fail Direction		
<input type="checkbox"/> PCS Range		ALARMS	LL 0	
<input type="checkbox"/> PCS Alarms			L 0	
<input type="checkbox"/> Loop Failure			H 0	
<input type="checkbox"/> CHARM Status Light Green		POWER FAIL	HH 0	
<input type="checkbox"/> CHARMs Autosense Complete		RANGE CHECK	0%	
<input type="checkbox"/> Fail Direction confirm			50%	
<input type="checkbox"/> PCS Display			100%	
<input type="checkbox"/> Document Markups Required				
INITIALS	Loop Check Status			
me	Loop Check Passed			
<input type="checkbox"/> Ready for Commissioning				
Document Markup Classification				
PCS Loop Failure Classification				

Notes and Observations:

Loop Information

Loop Name	17-A-3103
Unit Name	1-7-3 Fire Water
Status	Pass
Ready for Commissioning	Ready
Issued for Completions Date	
Review Approver	Admin
Field Checker	Field
PCS Checker	Control
Last Modified Date	2016-06-06 3:44:44 PM
Last Upload Date	2016-06-06 3:44:44 PM
Package Name	10-70-LFTR-70-0001-Rev1

Call 403 233 8015 or Email Info@WiseTools.ca for a demo and quote.