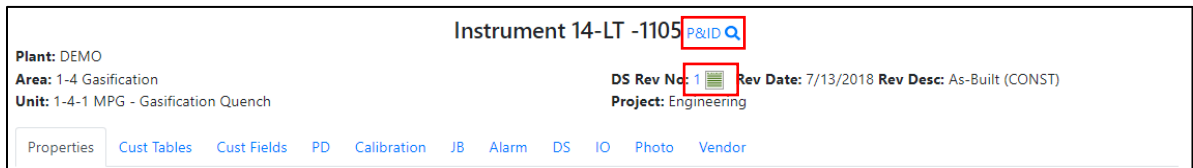


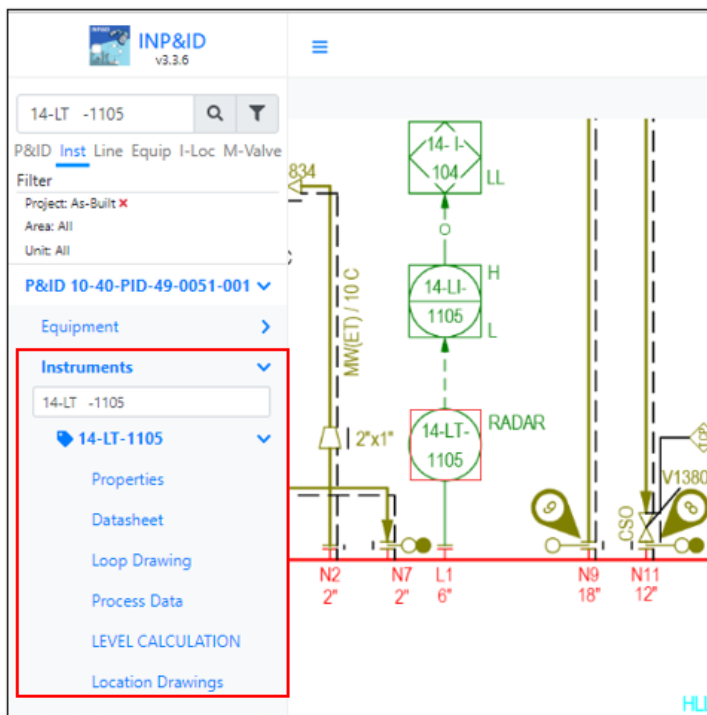
WiseTools is pleased to announce the release of our latest version of INView[®] v9.4.x. As the industry's preferred SPI/SI viewer on over 80 plant sites worldwide, INView[®] v9.4.x, among many other features and options, now digitally integrates with INP&ID with built in hotlinks to open related P&ID drawings from instrument properties, datasheets, loop drawings and process data reports.

INView[®] v9.4 New Features and Functions

- **User Manual: INView[®] User Manual is now available on-line to all users** - click the **User Manual** hotlink under the **INFO** icon to open. Then select a topic in the **Table of Contents** to jump directly to the item.
- **Instrument Tag Properties** – have more integration features. Header has two new icons:



- ✓ **P&ID icon** – click this icon to zoom to the related instrument on the P&ID. The focus goes to the Instrument tag search in INP&ID and a red box surrounds the associated instrument tag balloon. **INP&ID must be installed for this option to function.**







- ✓ **Datasheet icon** – click this icon to view the related datasheet.

- **Global Searches**

- ✓ Added a P&ID data filter to the Tag, Datasheet and Loop global searches.

- **Instrument Tag Search Results:** Added a Datasheet (**DS**) and a Loop column to the search results window. The icons found in the columns enable direct access to the related datasheet or loop drawing.

Tag Name	DS	Loop	I/O Type	Service	Tag Status	Instrument Type	Unit Name	Project	Ext Doc
14-LT -1207			AI	14-GF112 MPG REACTOR	---	LEVEL TRANSMITTER MAGNETOSTRICTIVE	1-4-1 MPG - Gasification Quench	Engineering	
14-LT -1208			AI	14-VE112 QNCH WTR SAFETY BUFFER	---	LEVEL TRANS GUIDED WAVE RADAR	1-4-1 MPG - Gasification Quench	Engineering	

- **Instrument Properties:**

- ✓ Added a new tab **Vendor**.

- Enables the user to **VIEW** vendor documents into two subfolders; Datasheet and Wiring.
 - Supports Word, Excel, PDF, DWG, RTF and TXT files.

- ✓ Added an **UPLOAD** function to the **Photos** and **Vendor** tabs. Upload function is only available to users with full access rights to the photo/vendor folders.

- **Datasheet Project Data Compare Report** - Added the datasheet **Form No.** to the Project and As-Built column to the data compare report header.

Header Name	As-Built	MOC-17355
	Form No: 105 Form Name: ON/OFF VALVE Rev: ARC Rev Date: 11/2/2009 Rev Desc: ARCHIVED ONLY	Form No: 105 Form Name: ON/OFF VALVE Rev: 4/1 Rev Date: 7/26/2019 Rev Desc: UPDATE FROM FAT(MOC-17355)

- **Demolished/Decommissioned Datasheets;** INView automatically applies a red **Demolished** watermark to the datasheet as well as the notes page.

- **SPI Archived Datasheets** - INView[®] now dynamically converts SPI archived datasheet PSR files to a PDF format and merges multi file/page PSR archives into a single PDF datasheet.

- **Loop Drawings:**

- ✓ **INView[®]** now has the option to graphically compare loop wiring changes between a **Project** loop and the **As-Built** loop. This is similar to the DS (datasheet) compare.

If the revision numbers between an **As-Built** and **Project** loop drawing are different, a **Loop Dwg Compare** hotlink is displayed below the Unit name in the **Loop Properties** window.

Loop A-211120

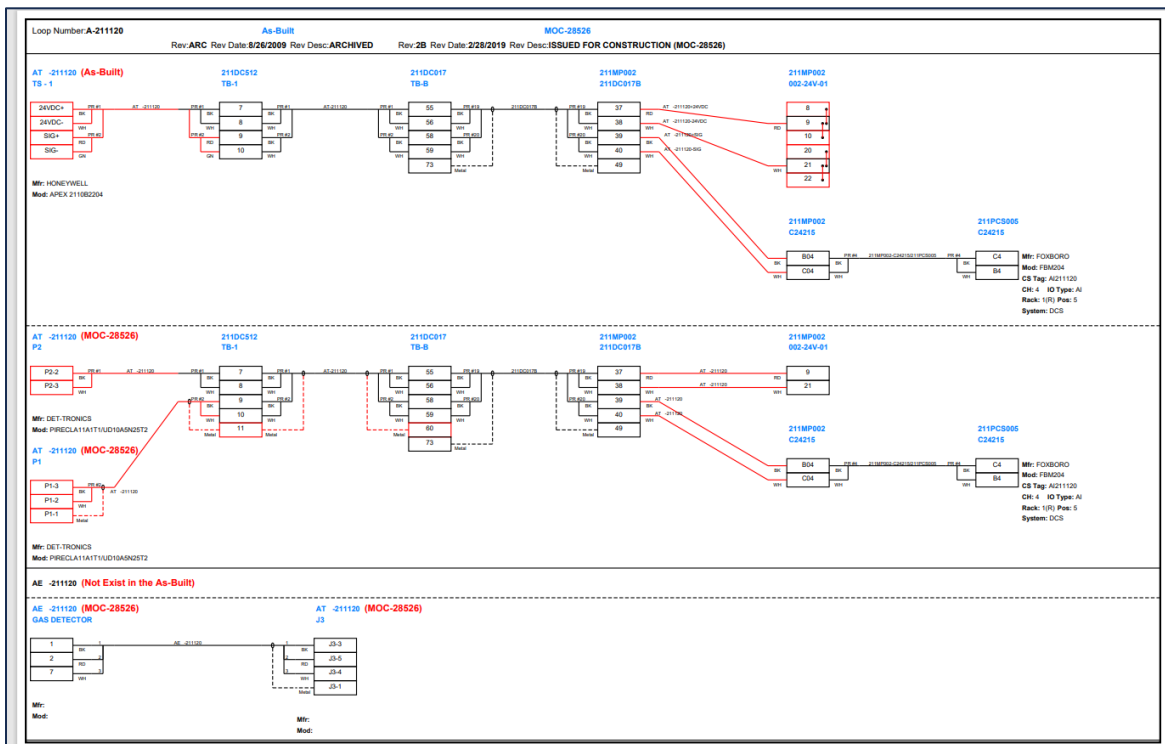
Plant: DEO
Area: DEMO
Unit: 211-ATMOSPHERIC/VACUUM DIST

Loop Dwg Compare: [As-Built](#)

Project: MOC-28526

Properties
Custom Fields
Instruments
Panel Wiring
Loop Dwg

Click the **As-Built** hotlink to view the comparison drawing. Differences are shown in red.



- ✓ **INView**® automatically converts SPI SMA archived loop drawings to PDF files making them available to view on a PC and tablet.
- ✓ **INView**® supports CAD loop drawings not generated in SPI and dynamically converts them to PDF files making them available on a PC and tablet.
- ✓ Added an option to add up to two **Index Custom fields** or **Custom Table fields** to the **I/O termination** data on the loop drawing.
 - **For example:** CHARMS Model No. can be automatically placed immediately below the I/O data.

- **Browsers:**

- ✓ Added more browser-specific How-To documents in the INFO > HowTo > Browser folder.
- ✓ Added a **“Save As”** option to all browsers.

Browser Name	Status	Filter	Item Operate
Default	Locked	<input type="text"/>	Browse Setting Save As

- ✓ A logo can be added to exported Excel browser reports.
- ✓ **Index Browser:**
 - Added additional standard SPI data fields that can be included in any custom index browser:
 - Critical Press
 - Critical Press UFLG
 - Critical Press UOM
 - CV Handwheel
 - CV Valve Size
 - Datasheet Dwg No
 - Mounting
 - Spec Rev ID
 - Specific Gas Gravity
 - Tag Category
- ✓ **Loop Browser:**
 - Added additional standard SPI data fields that can be included in any custom loop browser:
 - Loop Dwg ID
 - Rev ID
- ✓ **Alarms and Trips Browser:**
 - Added **P&ID hotlinks** to the **Alarms and Trips Browser**. The hotlinks connect P&IDs to external documents or to INP&D (when installed).

- **Panel Strip Reports - Added the Panel Strip with Adjacent Connections** report under the **Panel > Strips** tab. This report can be batch printed or downloaded as a PDF file.

Panel: 405ALARMJB Strip: TS-2 Adjacent Report

Plant: DEMO
Area: UTILITIES
Unit: 405 - CONTROL ROOM
Project: As-Built

Panel's Strips: TS-1 TS-2

Signals: All PDF

Panel Terminal Strip	Terminal	Cable Cable Set	Wire Tag Color	Terminal	Wire Tag Color	Cable Cable Set	Terminal	Panel Terminal Strip
TS-1	C	XS-405065 PR #1	XS-405065 BK	1	XS-405065 BK	405ALARMJB/405SMP021 PR #2	3	405SMP021-D FD-1/MISCELLANEOUS
	NO	XS-405065 PR #1	XS-405065 WH	2	XS-405065 WH	405ALARMJB/405SMP021 PR #2	4	405SMP021-D FD-1/MISCELLANEOUS
TS-1				3				
TS-1				4				

- ✓ In the above image, note that **hotlinks** are available to view Adjacent Panel Terminal Strips.
- ✓ The active strip report is not highlighted. Click a Panel's Strips button to view a different strip.

Panel's Strips: TS-1 TS-2

Signals: XS-405065 PDF

Panel Terminal Strip	Terminal	Cable Cable Set	Wire Tag Color	Terminal	Wire Tag Color	Cable Cable Set	Terminal	Panel Terminal Strip
XS-405065 TS-1	C	XS-405065 PR #1	XS-405065 BK	25	XS-405065 BK	405ALARMJB/405SMP021 PR #12	33	405SMP021-D FD-1/MISCELLANEOUS
XS-405065 TS-1	NO	XS-405065 PR #1	XS-405065 WH	26	XS-405065 WH	405ALARMJB/405SMP021 PR #12	34	405SMP021-D FD-1/MISCELLANEOUS

- ✓ Click the **Signals** drop down to display to a specific signal in the report.

Panel: 405ALARMJB Strip: TS-1 Adjacent Report

Plant: DEMO
Area: UTILITIES
Unit: 405 - CONTROL ROOM
Project: As-Built

Panel's Strips: TS-1 TS-2

Signals: XS-405065 PDF

Panel Terminal Strip	Terminal	Cable Cable Set	Wire Tag Color	Terminal	Wire Tag Color	Cable Cable Set	Terminal	Panel Terminal Strip
XS-405065 TS-1	C	XS-405065 PR #1	XS-405065 BK	25	XS-405065 BK	405ALARMJB/405SMP021 PR #12	33	405SMP021-D FD-1/MISCELLANEOUS
XS-405065 TS-1	NO	XS-405065 PR #1	XS-405065 WH	26	XS-405065 WH	405ALARMJB/405SMP021 PR #12	34	405SMP021-D FD-1/MISCELLANEOUS

- ✓ Shows **selected signal wires** in red.

Panel: XS -405065 Strip: TS - 1 Adjacent Report

Plant: DEMO
Area: UTILITIES
Unit: 405 - CONTROL ROOM
Project: As-Built


Panel's Strips: TS - 1

Signals: XS -405065 PDF


Panel Terminal Strip	Terminal	Cable Cable Set	Wire Tag Color	Terminal	Wire Tag Color	Cable Cable Set	Terminal	Panel Terminal Strip
	C		XS -405065		XS -405065	XS -405065	25	W0SALARMUS TS-1
	NO		XS -405065		XS -405065	XS -405065	26	W0SALARMUS TS-1

Enhanced the Datasheet Batch Print to PDF option - Added INView[®] version, printed date and page numbers to the Panel Strip and Datasheet report footers.


- ✓ Datasheet Report:

DP Flow Transmitter							INSTRUMENT DATA SHEET							
							0	8/16/2014	Issued for Purchase	SKS	TM	SB	DATA SHEET DOC NO ED48-11-FT-1342	
							A	11/21/2013	Issued for Quotation	SKS	TM	SB	Sheet: 1 of 2	
REV	DATE	DESCRIPTION	BY	INST CHK	PROC CHK	PROJ ENGR	Code	105	Rev	0				
INView@v9.3.11 Date Printed: 11/30/2022														

- ✓ PDF Panel Strip Report:

Area/Unit: 1-1 Crude and Vacuum Unit/1-1 Crude and Atmospheric						Panel Strip Report: 11 x 17 - Portrait				
						Project: Engineering				
						Panel: 11-R01-PM11			Page 2 of 14	
						Strip: CIOC-02				
No	Date	Description	By	Check	Approv	Doc No:			Rev No:	
INView@9.3.11										

- ✓ Panel Strip without Adjacent Connections Report:

Area/Unit: 1-1 Crude and Vacuum Unit / 1-1 Crude and Atmospheric						Panel Strip Report - 11 x 17 - Portrait				
						Project: Engineering				
0	11/10/2014	Issued for Construction	VJ	SBS	SB	Panel: 11-JBP-142		Page 1 of 1		
B	11/8/2014	Issued for Design	VJ	SBS	SB	Strip: TS-1				
A	7/10/2014	Issued for Review	VJ	SBS	SB					
No	Date	Description	By	Check	Approv	Doc No: WD48-11-JBP-142-001			Rev: 0	
INView@v9.3.11 Date Printed: 11/30/2022										

INView® Administrative Changes:

Further customize **INView®** views to suit your company’s specific needs Two new INVConfig configurations have been added. And, additionally, because of the new improved **INView®** license package, the administrator need only copy the **INView®** license file into the appropriate folders as it doesn’t have to be renamed because it now comes packaged as wt_inview.lic.

INVConfig:

- New configurations:
 - ✓ **Exclude PAU** – to exclude, by plant, a specific area, unit or project from INView.
 - ✓ **Exclude Plant** – to exclude one or more plants (ie. inactive but available in the SPI database) from INView.
 - ✓ **Exclude Index UDF** – to exclude one or more Index UDFs from INView.
 - ✓ **Loop Configure** – add two custom index data fields UDF or UDT to the wiring I/O termination strip.
- INVConfig no longer requires its own license. Instead, the INView license is copied into the INVConfig\license folder.

INView®:

- **INView® License Files:**
 - ✓ The INView license files now come packed in a single folder. The folder contains the wt_inview.lic file and its accompanying pdf file which details the license options. (Installer no longer has to rename the license file.)
- **Logos** can now be assigned:
 - ✓ to all reports using one logo from a single source,
 - ✓ by function; datasheet, panel strip and loop drawing,
 - ✓ by domain name, or
 - ✓ by plant name
- Added support for http://, https:// and URL SPI index associated document paths.
- Added support for SAML.

- Additional **INView® license** information has been included on the **INFO, About** page.

Version v 9.3.11
Copyright © 2005-2022 WiseTools Inc.
All rights reserved.

INView is a registered trademark of WiseTools Inc.

This product is licensed to
Name: Wisetools
Concurrent Users: Unlimited
Database: Unlimited
Expiry Date: 12/31/2022
IIS Site Name: INView
INAPI: Yes
INDigital: No
SPI/SI Version: 11

Smart© Instrumentation - © Copyright 2022 Intergraph Corporation Part of Hexagon. HexagonPPM.com | INTERGRAPH SMART INSTRUMENTATION, © 2018 Hexagon AB and/or its subsidiaries and affiliates. All rights reserved.

Warning: This computer program, including software, file formats, and audio-visual displays, may be pursuant to applicable software license agreement; contains confidential and proprietary information of WiseTools Inc and/or third parties which is protected by copyright and trade secret law and may not be provided or otherwise made available without proper authorization.

INView® System Requirements

- SPI/SI v2016, 2018, 2019 (v13)
- Microsoft Windows Server v2016, 2019
- Oracle v12 – v19 or Microsoft SQL 2014 - 2019